

As seen in...

BEAUTY **launchpad**
What's Taking Off in the World of Beauty
April 2008
beautylaunchpod.com
ation of Intercoiffure

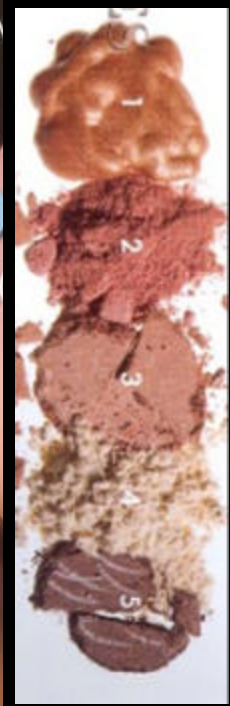
GREEN LIGHT!

- ▶ TIPS ON GOING ECO
- ▶ AVEDA'S CLEAN REGIME

Making Hair *Her-story*

WOMEN ROCK!

Ho TIGI PR



Pretty, Please

Spring's freshest faces will have your clients sitting pretty.

The newest looks from the runways capture pretty ease with soft-focus makeup that spells p-r-e-t-t-y. Translate these flattering palettes for the more conservative crowd with lightly contoured cheeks in beige-peach, lips done in matte pink or creamy nude, and eyes lit with glistening dove gray or twinkling taupe.

Eyes

- 1 **glōMinerals** glōReflection Cream Shadow "Golden Pearl"
- 2 **I Nuovi Cosmetics** Colours D27 "Cashmere"
- 3 **Sormé Minerals** Eye Color "Flash"
- 4 **Youngblood Mineral Cosmetics** Crushed Mineral Eyeshadow "Moonstone"
- 5 **Your Name** Dimensional Shadow "Volcano"